



THANK YOU FOR PURCHASING THE SAWBONES WRIST ARTHROSCOPY MODEL

This arthroscopy model may be used for diagnostic and visualization skills including triangulation and pathology identification. The model has color-coded anatomical structures for easy identification. Loose body retrieval may also be performed. With a little care and maintenance your new model should provide you with many years of service.



COMPONENTS & ANATOMY

MODELS INCLUDE:

- Soft tissue hand with vice block
- Color-coded wrist insert
- Bone clamp
- C-clamp

NOTE: It is possible to install small loose bodies for retrieval.

Replacement parts available at www.sawbones.com

ANATOMICAL STRUCTURE:

- Scaphoid (yellow)
- Lunate (orange)
- Triquetral (red)
- Trapezium (green)
- Trapezoid (green)
- Hamate (green)
- Capitate (blue)
- Radius (white)
- TFC (off-white)
- Vincula (off-white)



SET-UP INSTRUCTIONS

1. Use the bone and C-clamp combination to attach the model to the table as shown.
2. Securely attach the plastic vice block to the bone clamp.



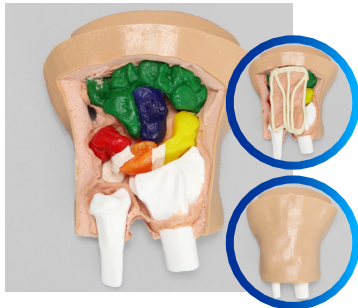
INSERT REMOVAL & REPLACEMENT

1. With the model still attached to the clamp, bend fingers toward palm.
2. Remove distal end of insert first.
3. Then carefully pull proximal end out.
4. Reverse procedure to install new insert.

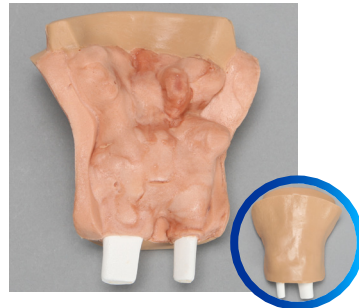
CARE & MAINTENANCE

Your model can be wiped down with any mild cleaner. Use only the dry erase marker on the model. Standard ink can not be removed. Store in a dry, dark place out of direct contact with sunlight.

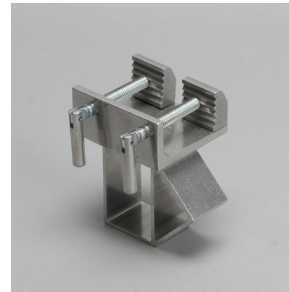
REPLACEMENT PARTS (WWW.SAWBONES.COM)



1415-1
Color-coded wrist insert,
standard



1415-2
Wrist insert, pathology



1600
Bone clamp



1601
C-clamp